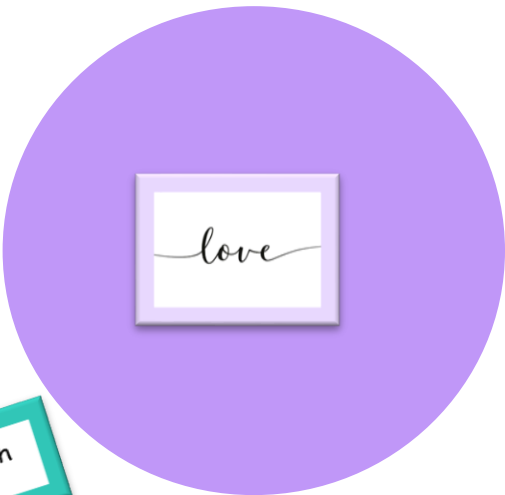


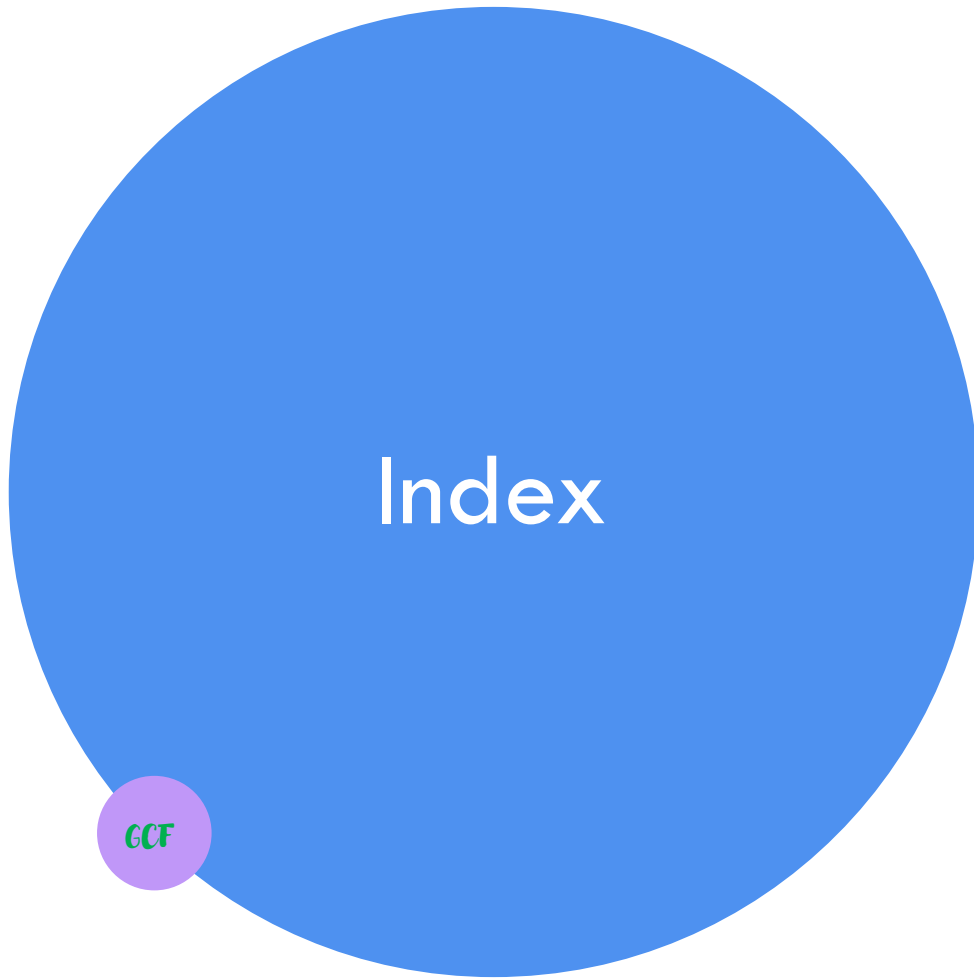
Compassion.



# ANNUAL PLAN 2021-2022

Stichting Gentle Care Foundation





- Preface
- Board Changes
- Advisory and supervisory board
- Organization Chart Foundation
- Overview of 2021-2022
- Construction of the clinic on-hold
- Project 'NEMO'
- Financial Annual Plan
- Timeline 2021-2022 & Summary

# Preface

2021 was dominated by changes, both privately and for the Gentle Care Foundation. We made plans to move from Aruba to Switzerland, saying goodbye to our friends on One Happy Island.

On a private level, we found out after two years that Aruba is a hard climate for our health. The heat and drought played a big part in the end. Aruba was also not ideal for the foundation. It is very decentralized where we had to arrange everything we wanted either remotely or off the island.

In addition to changes, the move also brought practical problems for the foundation. The lines with the other board members in Aruba became too long and consultation became difficult. The result was that the treasurer and the secretary resigned their positions.

We therefore had to look for new motivated and enthusiastic people who have a warm heart for the Gentle Care Foundation and who also want to perform a function. Luck has smiled on us. After many intensive discussions, we are pleased with a new board and also a legal advisor and two nurse advisors.

At the administrative level, Sarina became an advisor and the undersigned chairman. And with the new treasurer and secretary, we look forward to new challenges for the Gentle Care Foundation.

Chairman

Charles Kreleger





# Board Changes

Stichting Gentle Care Foundation

*Caring*

# Quick Introduction

## New Chairman

From April 2021, Charles Kreleger will be the new chairman of the Gentle Care Foundation.

With great enthusiasm he takes over from Sarina, who has indicated that she prefers to strengthen the foundation from behind the scenes.

## New Treasurer

From July 2021, Theo Kapinga will be our new treasurer.

## New Secretary

From September 2021 we can welcome Peggy Suvaal-Laurens as our new secretary.



# Board from mid 2021



**Charles Kreleger**  
Chairman



**Peggy Suvaal-Laurens**  
*Secretary*



**Theo Kapinga**  
Treasurer



# Advisory & Supervisory Board

Stichting Gentle Care Foundation




*Compassion*

# Advisory & Supervisory Board

- The Advisory & Supervision Council contributes ideas and debates about the vision and direction of the Gentle Care Foundation. The advice of the Council is essential as it assists the Foundation in directing, empowering and refocusing its activities. And because it contributes to ensuring that the important resources managed by the Foundation are optimally deployed for the benefit of society in Indonesia.
- One of the tasks of the Council is to advise the board of the foundation solicited and unsolicited on legislation and regulations, financial decisions and substantive issues relating to the day-to-day management of the foundation and the projects that the foundation supports in Indonesia. .
- The advice of the Council is not binding on the board.
- The Council and the Board can put forward both points.



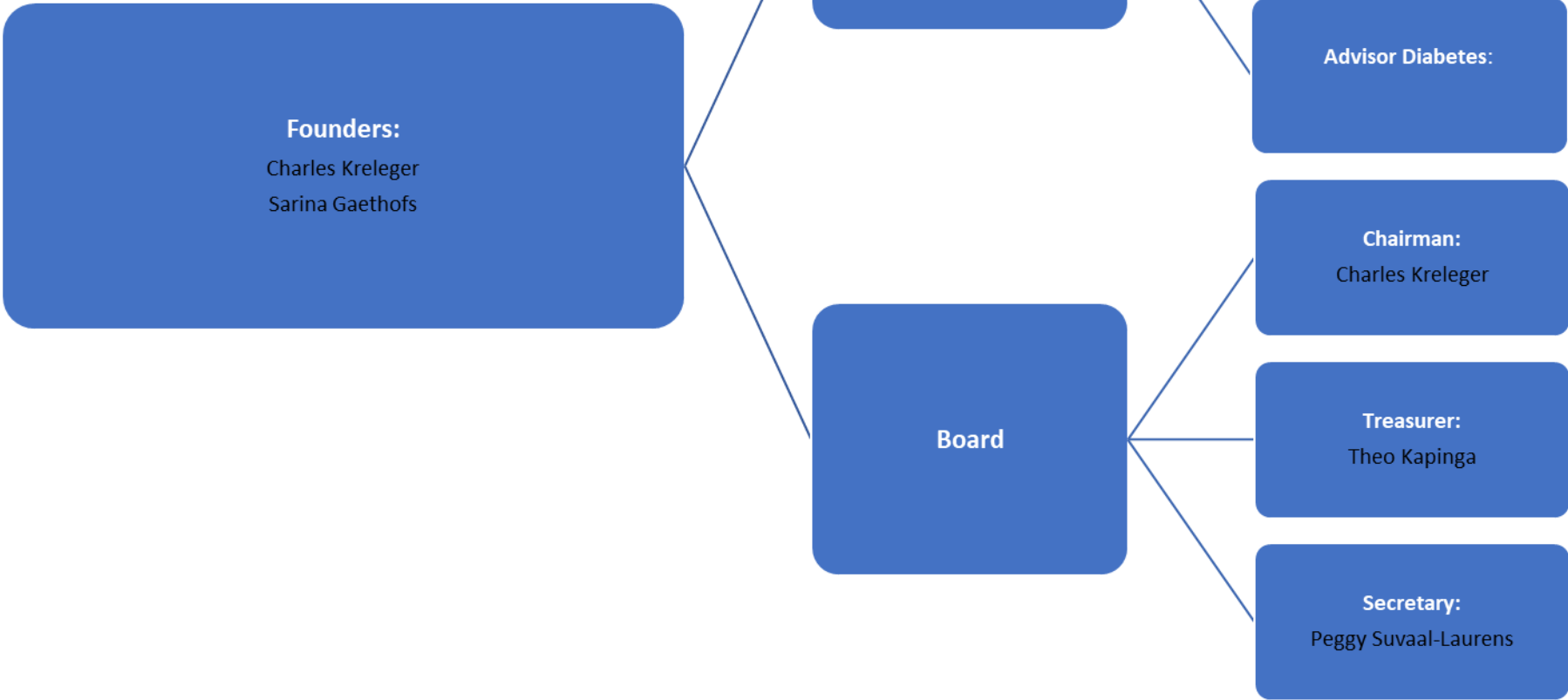


# Organizational Chart Board

Stichting Gentle Care Foundation



*Compassion*





# Overview of 2021- 2022

Stichting Gentle Care Foundation

Love

# What did 2021-2022 bring?

## New Start

- Change of board members
- We opt for a different approach.
- We are first focusing on transporting patients, who lack treatment for their wounds simply because they do not have transport to and from the clinic.
- In the short term, we are also committed to increasing and sharing knowledge and insight into the treatment of diabetes and wounds by means of seminars.

## Plans 2022

- We are exploring the possibilities of making patient transport possible in collaboration with various local hospitals.
- Start of activities in Indonesia: Our 2 nurse specialists, together with the board in Indonesia, organize a first seminar on wound treatment and diabetes.

## Donations

- In 2023 we start looking for donations and fundraising to support our project(s).



# Construction of the Clinic on-hold

Stichting Gentle Care Foundation

Compassion



# Project 'NEMO'

Stichting Gentle Care Foundation

*Caring*

# What is project 'NEMO'?



# NEMO

Non Emergency Medical Transportation



Gentle Care Foundation

## NON EMERGENCY MEDICAL TRANSPORT (NEMO)

INDONESIA

### INTRODUCTION

Non Emergency Medical Transport (NEMO) is a mobile unit that provide free service for the poor and sick family. The main aim of this program is to improve access into healthcare for those who can not afford the transportation cost. The NEMO will assist and transport patients from their house to the clinics or hospital to have a medical and other health care services.



### OUR TARGET POPULATION

Our target population is the sick and poor family who can not visit health care facilities due to can't afford the cost of transportation/mobilisation.

### OUR PARTNERS

We are partnering with some Government Hospital and Non Government Clinics.

### OUR TEAM

Our team is well trained and certified for basic life support and also psychological first aid.



Because our patients do not all walk equally well, live close to the hospital or have the money to pay for transport to the hospital, we want to purchase a NEMO.

We offer this service not only for the patients of our foundation but also for patients from various hospitals in the vicinity of our clinic.

Through this collaboration we can put our foundation on the map and of course offer people the care they so badly need and deserve.

A NEMO costs between 22,000 and 29,000 €.

# Objective







# Financial Annual plan 2021 & 2022

Stichting Gentle Care Foundation

Love

# Explanation of annual figures 2021

## **Explanation annual figures 2021**

In 2021, the Gentle Care Foundation did not yet carry out any activities. The foundation was in the start-up phase. There has been a change of management. The chairman and treasurer therefore only contacted a financial institution to open a bank account at the end of 2021.

Theo Kapinga  
*Treasurer of the Gentle Care Foundation*

December 26, 2022

## **Explanation annual figures 2022**

Explanation annual figures 2022

Due to long waiting times after corona at the financial institutions, the bank account of the Gentle Care Foundation was closed in July 2022. Also in 2022, the Gentle Care Foundation did not yet carry out any activities. The foundation was in the start-up phase.

This annual financial plan contains the figures for the year 2022.

The financial year 2022 has been closed with a balance of € 0,00.

The proposed policy for the coming years is aimed at fundraising, gifts and donations and the local implementation of the foundation's activities in Indonesia.

# Income statement foundation GCF 2021

## Income statement Gentle Care Foundation for 2021

No activities performed. The foundation has not earned any income and incurred no costs in 2021.

## Income statement Gentle Care Foundation for 2022

<i>Income</i>	2022
Income out of donations and gifts	€ 168
<b>Total income</b>	<b>€ 168</b>
<i>Cost</i>	
Cost opening bank account	€ 120
Cost website	€ 48
<b>Total cost</b>	<b>€ 168</b>
<b>Total operating result</b>	<b>€ 0,00</b>



# Timeline 2021 & Summary

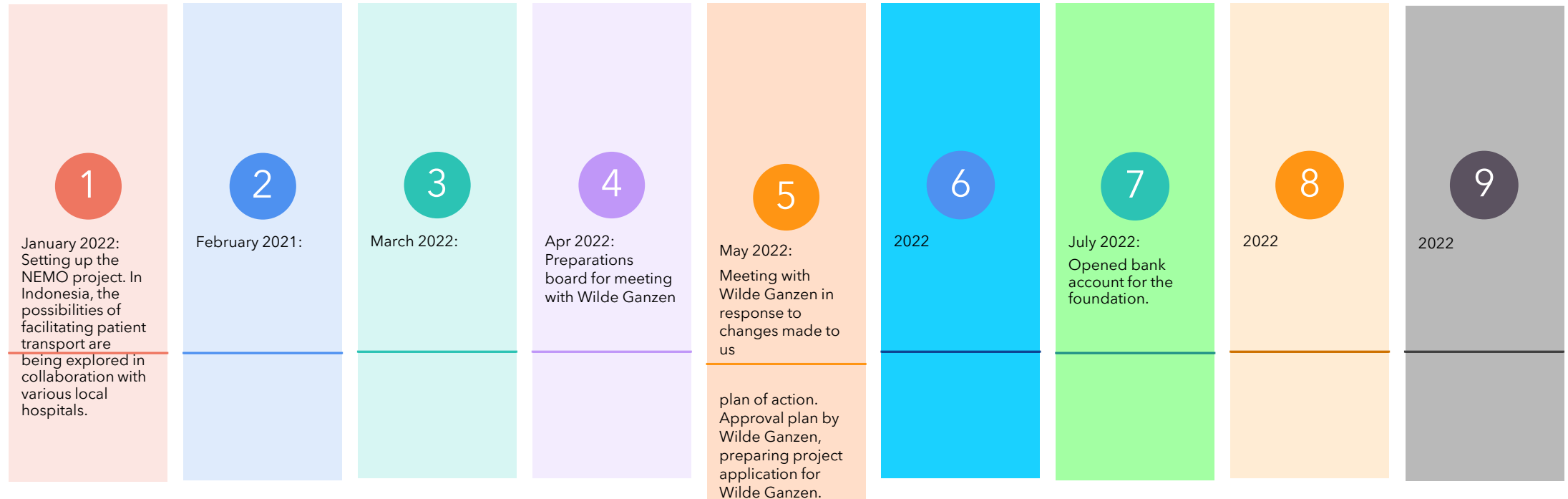
Stichting Gentle Care Foundation

*Caring*

# Timeline 2021(1)



# Timeline 2022 (2)



# Timeline 2022 (3)



# Summary


As you have been able to read, 2021 was the year of changes and adjustments.

We entered the year 2022 with a strong foundation and clear goals.

The coming six months will be devoted entirely to raising funds and donations.





An illustration featuring two women on either side of a large purple circle. The woman on the left is wearing a blue top and dark pants, holding a large red heart. The woman on the right is wearing a blue top and grey pants, holding a large pink heart. The purple circle in the center contains the text: "Not all of us can do great things. But we can do small things with great love." Below this text, the name "Mother Theresa" is written. In the bottom right corner of the purple circle, there is a small blue circle containing the words "Caring Love Compassion".

Not all of us can do  
great things.  
But we can do small  
things with great love.

Mother Theresa

Caring  
Love  
Compassion



Thank you

## Stichting Gentle Care Foundation

### Adress

Stichting Gentle Care Foundation  
Poortland 6  
1046BD, Amsterdam  
Nederland

### Contact

Tel: +31(0)638501580  
E-mail: [info@gentlecarefoundation.nl](mailto:info@gentlecarefoundation.nl)  
Website: [www.gentlecarefoundation.nl](http://www.gentlecarefoundation.nl)

### Bank details & Fiscal

IBAN NL: NL32 RABO 0198 1956 99  
Bank Indonesië:  
Kvk-nummer: 78597706  
Fiscaalnummer: (ANBI) 861464217